

Commercial Detail

SubType

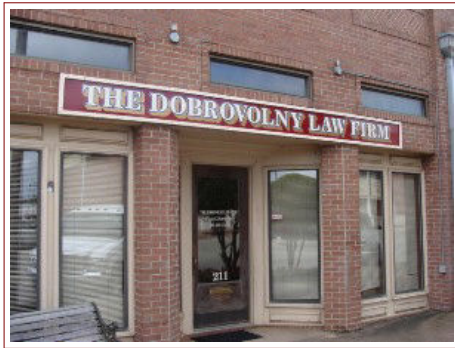
Price

MLS number

Imp-No Bu

129,900

4707



Legal	Lot 6, Block 137, C.O.J.		
Status	Active	Recent Change	Other Info Chg
Exterior	Brick	I.S.D.	J'ville
LotSqFt	3,250	Acreage	0.07
LandDim	25' x 130'	County	Cherokee
Tax/SCE	\$2,234.30 ('08), AD	Exemptions	None
City	Jacksonville	Year Built	1920s
Zip	75766	State	TX
X Street	Main	Zone	H-cent.bus.dist.
StndtFtr	Nicely appointed professional office in town.		
		Htng/Cooling	CG Heat, Elec Air

211	E	Commerce	
RoadTyp	City	Subdiv	No
Avl/Pos	Subject to party in possession		

NarrtveDscrptn

A law office since the 1980's, this nicely appointed building has: reception area w/ receptionist desk; two paralegal work stations; clerical office, kitchen, law library; large storage room; restroom; two attorney's offices. Office areas are carpeted or have parquet throughout. There is a dock height rear door that opens to an alley. This appealing office is located in the thick of downtown Jacksonville. Off-street parking is available.

Directions:

Located on south side of Commerce Street between Main and Ragsdale and just one block north of U.S. 79 (East Rusk)

BusName	N/A	AirPhoto	Available	#HtgUnits	2	H/C SqFt	3,250.0
BusType	N/A	PlnsOnFil	No	A/C Type	Central Electric	H/C SF Srce	AD
OrgnzedAs	N/A	Struct#1	Office	A/C Cap	Unknown	PriceOfRE	129,900
YearsInOp	0	Struct#2	----	#A/CUnits	2	BsInvAvail	N/A
Misc1	Nice Office	Struct#3	----	Sprinklrd	No	PrOfBsInv	0
FireDist	Yes	Struct#4	----	Emer Gen	No	BusPPAvl	Yes
PrncipUse	Professional	Struct#5	----	ElcSvcTp	220	PrOfBusPP	0
PrpCndSt	Yes	Struct#6	----	ADA Accs	No	TrdFixAval	Yes
#Buildings	1	Struct#7	----	Sec Sys	No	PrOfTrFixt	0
#Stories	1	Struct#8	----	TchReady	Yes	LseExpDate	
Constructn	Steel Frame	Struct#9	----	KitchnFac	Yes	Sublseable	No
Foundatn	Slab	Struct#10	----	#MnsRms	1	SgnNoCmp	Yes
ExtWalls	Brick	RoadSurf	Asphalt	#LdsRms	1	FinancsAv	N/A
Roof	Built Up	NrstUSHw	U.S 79	#PassElvtr	0	AnnHazIns	1,941
Floors	Carpet, Vinyl,	NrstIntst	I-20	#FrtElevtr	0	WaterSup	J'ville
ParkingSF	0.0	RRAccess	No	#Escalator	0	AvgWater	65
#PrkgSpc	0	TotalSF	3,250.0	Feature#1	2 HVACs	Sewer	Municipal
PrkgSurfc	0	OfficeSF	2,250.0	Feature#2	Decor	ElecCo	TXU
CovrdPkg	No	RetailSF	0.0	Feature#3	Storage	AvgElec	255
#OHDoors	0	WrhseSF	1,000.0	Feature#4	----	GasCo	CenterPoin
OHDrght	0	ManufSF	0.0	Feature#5	----	AvgGas	70
#Docks	1	OtherSF	0.0	Feature#6	----	PhoneCo	Verizon
#Ramps	0	WhseClrnc	12.0	Feature#7	----	SanSrvce	Municipal
Misc2	----	Fencing	None	Feature#8	----	DeedRestr	No
LandSize	3,250	HeatType	Central Gas	Easements	Utility	Minerals	All Owned
PlatOnFile	No	HtgCap		EPAIssues	None Known		